

CD209 Antibody
Rabbit mAb
Catalog # AP91403**Specification**

CD209 Antibody - Product Information

Application	WB
Primary Accession	Q9NNX6
Clonality	Monoclonal
Other Names	
CD209 antigen-like protein A; CDSIGN; CIRE; CLEC4L; DCSIGN; Dendritic cell specific ICAM 3 grabbing nonintegrin 1; HIV GP120 Binding Protein; SIGN-R1; SIGNR5;	
Isotype	Rabbit IgG
Host	Rabbit
Calculated MW	45775 Da

CD209 Antibody - Additional Information

Dilution	WB~~1:1000
Purification	Affinity-chromatography
Immunogen	A synthesized peptide derived from human CD209
Description	Pathogen-recognition receptor expressed on the surface of immature dendritic cells (DCs) and involved in initiation of primary immune response. Thought to mediate the endocytosis of pathogens which are subsequently degraded in lysosomal compartments.
Storage Condition and Buffer	Rabbit IgG in phosphate buffered saline , pH 7.4, 150mM NaCl, 0.02% sodium azide and 50% glycerol. Store at +4°C short term. Store at -20°C long term. Avoid freeze / thaw cycle.

CD209 Antibody - Protein Information**Name** CD209**Synonyms** CLEC4L**Function**

Pathogen-recognition receptor expressed on the surface of immature dendritic cells (DCs) and involved in initiation of primary immune response. Thought to mediate the endocytosis of pathogens which are subsequently degraded in lysosomal compartments. The receptor returns to the cell membrane surface and the pathogen-derived antigens are presented to resting T-cells via MHC class II proteins to initiate the adaptive immune response.

Cellular Location

[Isoform 1]: Cell membrane; Single- pass type II membrane protein [Isoform 3]: Cell membrane; Single- pass type II membrane protein [Isoform 5]: Cell membrane; Single- pass type II membrane protein [Isoform 7]: Secreted. [Isoform 9]: Secreted. [Isoform 11]: Secreted.

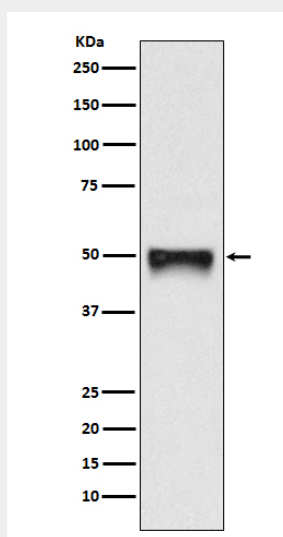
Tissue Location

Predominantly expressed in dendritic cells and in DC-residing tissues. Also found in placental macrophages, endothelial cells of placental vascular channels, peripheral blood mononuclear cells, and THP-1 monocytes.

CD209 Antibody - Protocols

Provided below are standard protocols that you may find useful for product applications.

- [Western Blot](#)
- [Blocking Peptides](#)
- [Dot Blot](#)
- [Immunohistochemistry](#)
- [Immunofluorescence](#)
- [Immunoprecipitation](#)
- [Flow Cytometry](#)
- [Cell Culture](#)

CD209 Antibody - Images

Western blot analysis of CD209 expression in HACAT cell lysate.